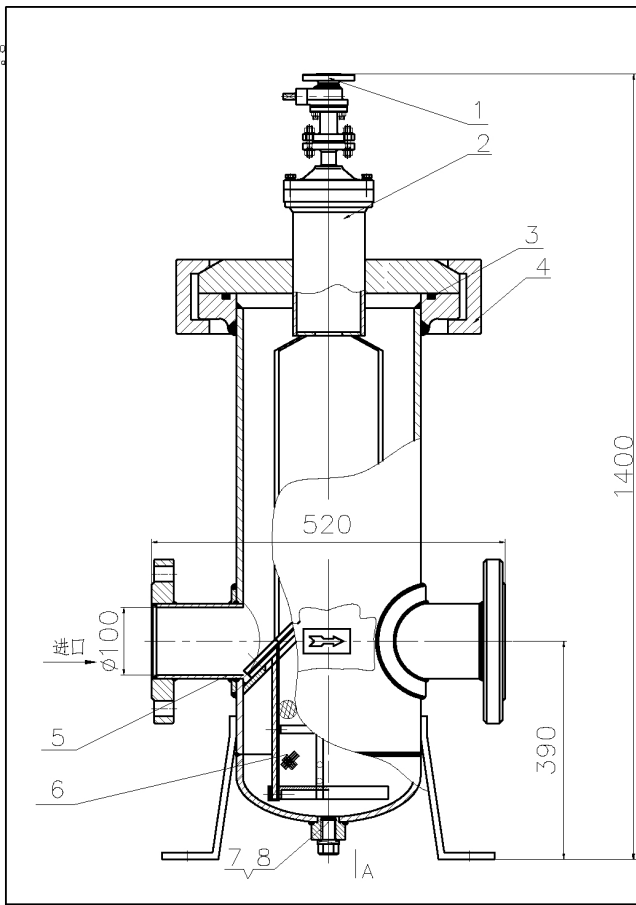
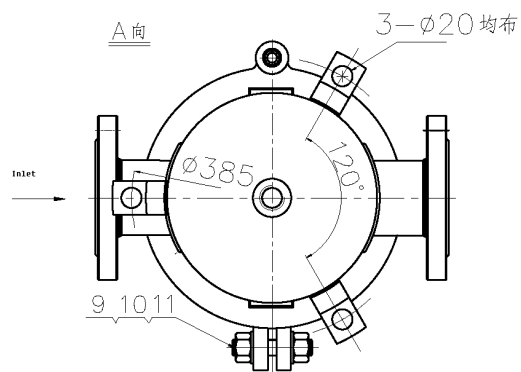


LPGX-100
 1.6, 2.5MPa



Technical Requirements:
 1. Welding according to the standard HG20594-97.
 2. Pressure test: the finished product shall be tested under 1.5 times of the nominal pressure.



11	GB/T1229-91	High-tensile nut	2	M24
10	GB97.2-85	Plain washer	2	φ24
9	GB901-88	Stud	1	M24X150
8	GB1235-76	O-shape sealing ring	1	φ26Xφ2.4
7	SY8.908.019	Drain valve	1	
6	SY5.338.001	Filtering unit	1	
5	SY5.005.001X	Body	1	
4	SY8.493.003/004	Clamp	2	
3	GB1235-76	O-shape sealing ring	1	φ315Xφ8.6
2	SY1.318.002X	Up cover	1	
1	SY1.465.004X	Exhaust valve	1	

序号	代号	名称	数量	备注
总装图				SY1.468.003X
设计	审核	批准	日期	比例
张明	李华	王强	2023.10.1	1:4
工艺	日期	共页	第页	

上海一诺仪表有限公司